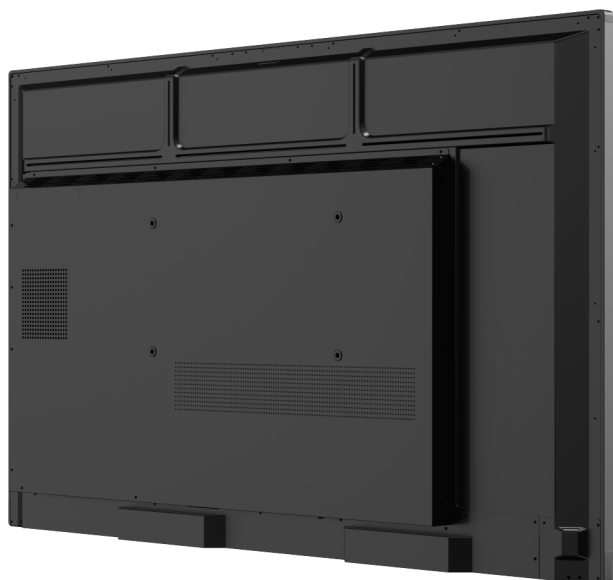


Inteligentna Elektronika

Ul. Raduńska 36A
83-333 Chmielno

Tel.: +48 730 90 60 90

E-mail: info@centrumprojekcji.pl



Nazwa

**Monitor interaktywny ViewSonic
ViewBoard IFP6550-5**

Cena

0,00 zł

Producent

ViewSonic

OPIS PRODUKTU

Display

Panel Size: 65"

Panel Type: TFT LCD Module with DLED Backlight.IPS

Display Area (mm): 1428.48(H) × 803.52(V)

Aspect Ratio: 16:9

Resolution: UHD 3840x2160

Colors: 1.07B colors (10bit)

Brightness: 400 nits (typ.), 450 nits (max.)

Contrast Ratio: 1200:1 (typ.) 5000:1 (DCR)

Response Time: 8ms

Viewing Angles: H = 178, V = 178 typ.

Backlight Life: 50,000 hours (Min)

Surface Treatment: Hardness: 7H, Anti-glare coating

Bezel: Slim

Orientation: Landscape

Platform

Processor: ARM Cortex-A73*4 + Cortex-A53*4

RAM: 4GB

Storage: 32GB

Touch

Type/ Tech: Ultra Fine Touch Technology (IR Recognition)

Touch Resolution: 32768 × 32768

Touch Point: Windows: 40 points of touch, Android : 20 points of touch

INPUT

HDMI: 2.0 x 3 (3840x2160 @60Hz, HDCP2.2, HDMI1 with CEC/ARC)

RS232: x1

OPS: x1

WiFi: x 1 module slot

OUTPUT

HDMI: x1 (4K@60Hz)

Audio: x1 (Earphone out)

SPDIF: x1 (optical)

LAN

RJ45: x2

USB

Type A: 2.0 x 2

3.0 x 4

Type B: x2, for touch

Type C: x1 (DP 1.2, USB2.0, PD65W, Ethernet 100M)

SPEAKERS

15W x 2 + 16W x 1 subwoofers

Top Camera Plate

Yes

Embedded OS

Android 11

Bundle Software

Basic Annotation Software: myViewBoard

Pro Annotation Software: myViewBoard for Windows (Embedded in Windows Slot-in PC)

Wireless Presentation: vCast/myViewBoard Display App

Special Features

All-in-one USB port: "SmartPort™ USB" to all channels.

Simple LAN sharing between IFP and slot-in device: Yes

Light Sensor: Yes

Power

Voltage: 100-240VAC +/- 10% Wide Range

Consumption: 95W(typ.), 0.5W (off)

ERGONOMICS

Wall Mount (VESA®): 600 mm x 400 mm

OPERATING CONDITIONS

Temperature (° C): 0°C to 40°C

Humidity: 10% ~ 90% RH non-condensing

DIMENSIONS (W x H x D)

Physical (inch / mm): 58.6 x 35.3 x 3.5 in / 1488 x 897 x 90 mm

Packaging (inch / mm): 65.7 x 39.8 x 8.8 in /1699x 1010x 233 mm

WEIGHT

Net (lb / kg): 89.3lb/40.5kg

Gross (lb / kg): 109.6lb/49.7kg

REGULATIONS

cTUVus, FCC/ICES003, Energy Star 8.0, EMC/CE, CB/LVD, GOST-R/EAC, UkrSEPRO, EPEAT, Mexico NOM , Mexico Energy, UKCA, UK-EEL, BSMI, BIS, LBL(Low Blue Light Certification), Flicker Free, Green BOM, RoHS, ErP-Eco, REACH, SCIP, WEEE, TPCH , Packing waste, CA65, PAIA

PACKAGE CONTENTS

"1. Power cord by ship area (UK/EU)

2. Remote control with AAA battery

3. Touch USB cable

4. Touch pen x 2 (VB-PEN-009)

5. Quick Start Guide + Compliance statement

6. RS232 adapter

7. Clamp x 5
 8. Camera Plate
 9. Screw x 8
 10. HDMI cable 3m
 11. USB-C cable 1.8m"
- Compatible Slot-in PC
VPC12-WPO series
VPC25-O-B series
VPC27-O-B series